



FLEX Sensor

Autonomous Classifier Detector *Flexible traffic data collection*

Security and Access Control • Logistics and Industry • **Transport and Communications Infrastructure**

Traffic Data Collection

The FLEX Traffic Measurement System enables remote, accurate and cost-effective management of efficient traffic data collection.

Vehicle detectors, available in multiple configurations, installed on the road surface collect and send traffic data over the Internet.



Highlighted Features

- Quick installation
- Autonomous operation
- Remote management
- High quality data per vehicle
- Long battery life: 10 years ⁽¹⁾
- Remote software update
- Extremely rugged design (IP68)
- Track temperature reports

(1) Sending data once a day.

www.simec.es

Sistemas de identificación y mecanismos SL
c/ Tomas Breton, 50 - 28045 Madrid
Tel: (+34) 915.273.392 info@simec.es

SIMEC AMS Ltda.
Cra 15 # 106-32 Of. PH4 Bogota
T: +57 601 2450112
M: +57 301 7663855

FLEX Vehicle Detector

The STMS FLEX is a patented wireless detector powered by a long-lasting battery that uses magnetometric technology to detect, classify and measure the speed of passing vehicles. The detector is designed to operate completely autonomously, sending data via the mobile phone network, and thanks to its long battery life it is a very flexible device that can be configured for almost any scenario, both for continuous data collection and for scheduled periods.

Using the latest magnetometric technology, together with artificial intelligence (AI) algorithms, very high quality data is obtained.

Easy installation, remote management

The FLEX is the ideal solution for IMD data collection, seasonal traffic variations, spot surveys and much more. The detector is designed for stand-alone operation and is installed in less than 15 minutes. Once installed, the detector is ready to detect and deliver high-quality vehicle data for up to 10 years, with daily data delivery. The combination of easy installation, high-quality data and the flexibility of remote management makes the FLEX detector a perfect replacement for other traditional solutions.

Physical specifications

Dimensions 155 mm ø 115 mm height
Protection type IP68

Operating specifications

Battery life 10 years (Data sent once a day).
Operating temperature: -35°C to 70°C

Installation specifications

Drill diameter > 170 mm ø
Depth 180 mm
Average installation time: less than 15 minutes per lane

Mobile network specifications

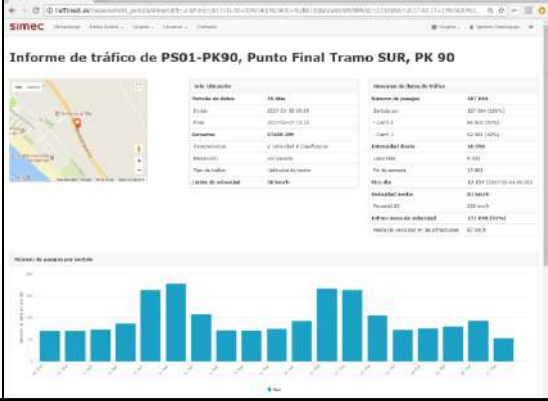
Bands: GSM:850,900,1800,1900 MHz
UMTS:800,850,900,1700,2100,1800,1900,2100 MHz
LTE:700,800,850,900,1700/2100,1800, 1900,2100,2600 MHz
SIM: Mini-SIM (ISO/IEC 7810:2003, ID-000)

Performance specifications

Count: 99% reliability.
Length: 1% average error.
Speed: -200 to +200 km/h (0.1 km/h resolution)
Speed accuracy: +/- 1% average
+/- 4% per vehicle (Percentile: 85%)
Classification types: **95%** with Motorcycle, Light, Medium, Truck and Bus, Trailer . Other possible schemes, up to 13 classes.
Track temperature: -40°C to +125°C (0.1°C resolution)

v. 1.3 Jul 2024
Specifications subject to change without notice

simec



TrafficWeb

Traffic management web application

Security and Access Control • Logistics and Industry • **Transport and Communications Infrastructure**

Traffic Measurement System

Trafficweb Traffic Measurement System enables accurate, cost-effective remote management of traffic data collection. Vehicle detectors, available in multiple configurations, installed on the road surface collect and send traffic data via the Internet.

Introduction

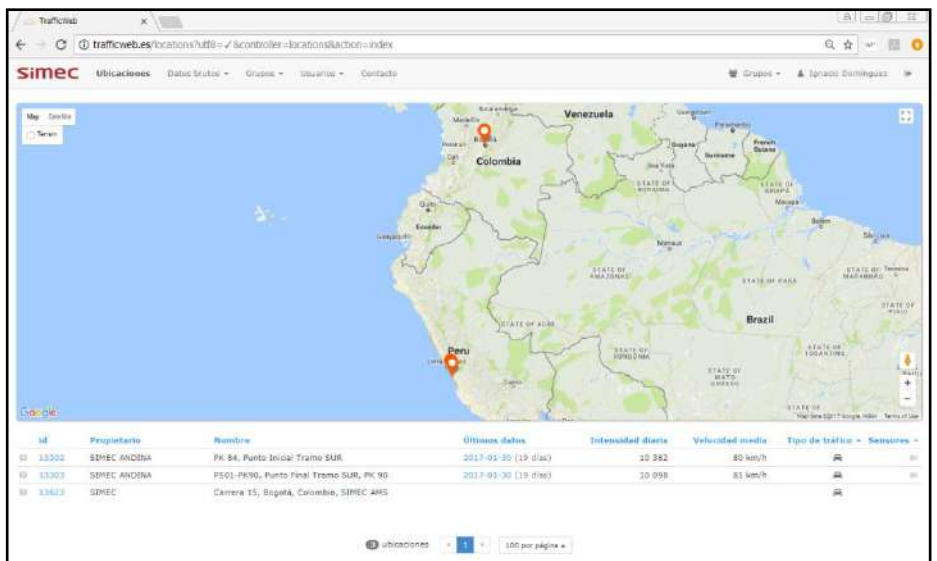
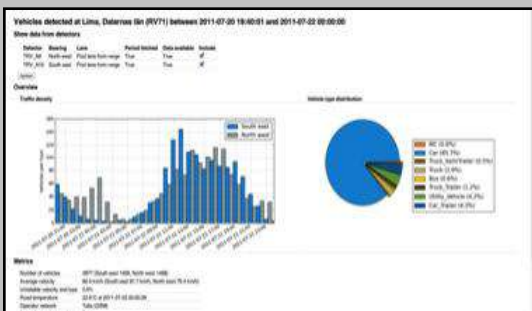
TrafficWeb web administration interface Users can schedule the collection and retrieval of traffic data and monitor the status of the system. Users can also enable automatic data transfers to other installed systems as well as notifications when new data is updated from vehicle detectors. Trafficweb already exists and is contracted as a traffic data collection and reporting service.

Remote management

Sensus vehicle detectors are designed so that users do not have to be on-site to collect traffic data. Instead, all interactions with the detectors are done through TrafficWeb . Here the user can schedule data collection frequency through a user-friendly web interface and receive notifications when data is collected and updated. The user can also check the status of the detectors with information on battery charge, road temperature and network connection quality.

Complete solution

TrafficWeb , in conjunction with STMS vehicle detectors, offers a complete traffic data collection and reporting solution. In most cases, however, users already have existing systems for analysis and reporting that they can continue to use and only use TrafficWeb for scheduling collection and system monitoring. This is achieved by setting up automatic data transfers, which allow the user to continue working with their existing systems while still benefiting from the new possibilities offered by Sensus vehicle detectors .



www.simec.es

Sistemas de identificación y mecanismos SL
c/ Tomas Breton, 50 - 28045 Madrid
Tel: (+34) 915.273.392 info@simec.es

SIMEC AMS Ltda.
Cra 15 # 106-32 Of. PH4 Bogotá
T: +57 601 2450112
M: +57 301 7663855

v. 1.3 Jan 2024

